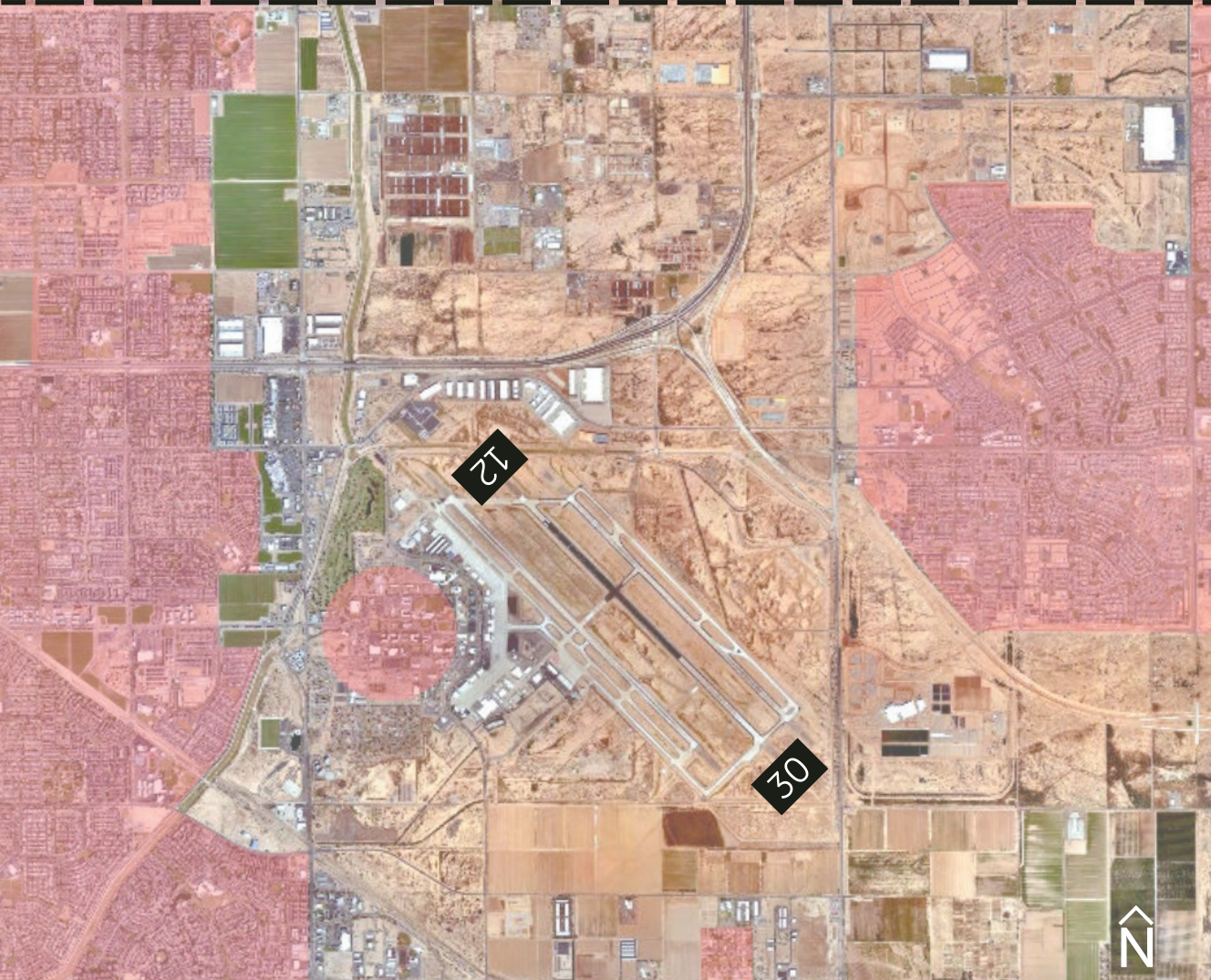


POWER LINES



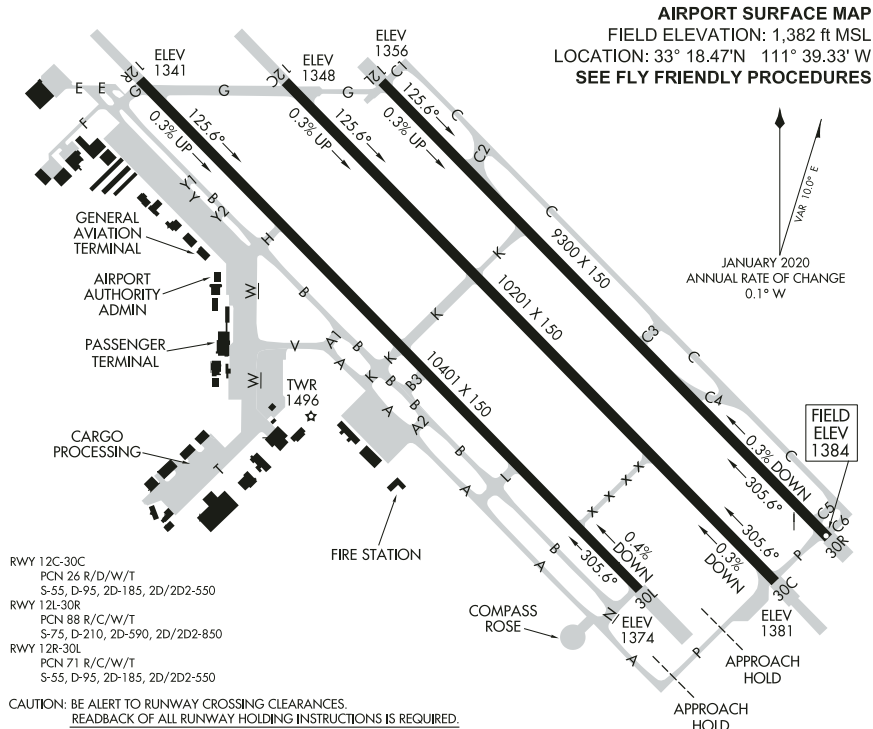
**NOT FOR
NAVIGATIONAL USE**

 Please Avoid
Noise Sensitive Areas

FLY FRIENDLY PROCEDURES

1. Runway 30 is designated as the calm wind runway.
2. Use best rate of climb, consistent with safety and ATC procedures.
3. Runway 12L/30R for jet aircraft pattern work (3100ft MSL) is preferred. When using runway 30R, start right crosswind turns as soon as practical to avoid residential areas north of the airport.
4. Jets are requested to use NBAA Standard Noise Abatement Departure or comparable aircraft manufacturer procedures.
5. Propeller aircraft requested to use AOPA Noise Awareness Steps.
6. Helicopter traffic avoid low overflights of noise sensitive areas.
7. Compliance with fly friendly procedures are appreciated and at pilot's discretion.

Safety always comes first, but being a good neighbor is important too!



Line & Pilot Services

- ➔ Open 24 hours for service
- ➔ Quick turnarounds
- ➔ Jet-A & 100LL fuel
- ➔ Government, DLA contract fuel
- ➔ World Fuel Services contract fuel
- ➔ Textron Aviation, Embraer, and Gulfstream OEM Service Centers
- ➔ Hangar and tiedown space
- ➔ Pilot lounge and showers
- ➔ Flight planning room
- ➔ Gourmet catering
- ➔ US Customs on-site



Passenger Services

- ➔ Free Wi-Fi
- ➔ Conference / training rooms
- ➔ Barrio Brewing Company on-site
- ➔ Rental cars available
- ➔ Courtesy shuttle to area hotels
- ➔ ATM



Traffic Pattern Altitudes

GA.....2600 ft MSL Helicopters.....2100 ft MSL Jets.....3100 ft MSL

Radio Frequencies

Gateway Aviation Services (FBO) 129.875
 ATIS 133.50/270.275
 AWOS (After Tower Closes)..... 480-988-9428
 Gateway Tower (1200-0700 ZULU) 120.60/289.4
 Gateway Ground 128.25/275.8
 Gateway Clearance 135.05
 PHX TRACON (Approach/Departure Control).....124.90/353.8
 VORTAC.....113.3 CH 80
 ILS (Runway 30C) 110.15
 Prescott FSS..... 122.6 122.2 122.3

Frequencies subject to change - Not for navigational use

Airport & Air Traffic Notes

- ➔ City of Mesa Police, Fire Department and ARFF (Index C)
- ➔ Air traffic control tower operational 1200-0700 Zulu daily
- ➔ Communicate air traffic intentions on CTAF – 120.6 during unattended hours
- ➔ Runway and taxiway lighting "on" during all night and limited visibility hours
- ➔ U.S. Customs and Border Protection 480-279-2928
- ➔ Watch for occasional wildlife in vicinity of airport